

PT. HARTEX GLOBAL INDUSTRIAL

---



**HOMWELL**  
The Solution Store

# Tools Equipment

Product Catalogue

---

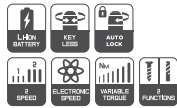
**KSEIBI** *Production*

[www.homwell.id](http://www.homwell.id)



## ▶ CORDLESS IMPACT DRILL

KSB 20V-40, 20V 13MM  
2 BATTERIES - 710711  
HW - 006940



### Specification & Features

- 20 volt class - lightweight, yet powerful.
- Integrated LED work light.
- Max output torque 45Nm.
- 13 mm keyless chuck
- Li-on Battery

## ▶ CORDLESS SCREWDRIVER

1/4" 4V 710400  
HW - 006942



### Specification & Features

- Ideal to drive & Remove screws as well as drill when working with plastic, wood & sheet metal
- Lightweight design reduces fatigue
- Forward & Reverse Switch easily Toggles between screw driving & Removing
- 1300 MAh Rechargeable lithium-ion Battery Provides long-lasting use
- 4 NM Max Torque - Speed 200 Rpm
- Charging Time: 5 - 7 Hours

## ▶ ELECTRIC DRILL

KBM 400 S  
10MM KEYLESS  
400W 710711  
HW - 006940

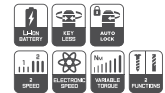


### Features:

- Lightweight, Small Yet Powerfull.
- Variable Speed Trigger Offers Enhanced Control 0-2800 Rpm
- 450w Motor With Hardened Steel Gears
- Ensures Tool Longevity.
- Designed For Ergonomic Use

## ▶ CORDLESS DRILL

KSB 12V-22, 12V DRIVER  
10MM, 2 BATTERIES  
710100, HW - 006941



### Features:

- Lightweight, Small Yet Powerful.
- Useful for hard-to-maneuver tasks.
- Two Settings at 0-350 rpm and 0-1,350 Rpm to Match Speed to task
- 21 + 1 Clutch settings for more precise torque adjustment



## ▶ METAL DRILL A



B-tip



Article No.	Diameter	Working Length	Overall Length
	mm	mm	mm
571010	1.0	12	34
571015	1.5	18	40
571020	2.0	24	49
571025	2.5	30	57
571030	3.0	33	61
571032	3.2	36	65
571035	3.5	39	70
571040	4.0	43	75
571042	4.2	43	75
571045	4.5	47	80
571048	4.8	52	86
571050	5.0	52	86
571055	5.5	57	93
571060	6.0	57	93
571065	6.5	63	101
571070	7.0	69	109
571075	7.5	69	109
571080	8.0	75	117
571085	8.5	75	117
571090	9.0	81	125
571095	9.5	81	125
571100	10.0	87	133
571105	10.5	87	133
571110	11.0	94	142
571115	11.5	94	142
571120	12.0	101	151
571125	12.5	101	151
571130	13.0	101	151

## ▶ MIXED DRILL BITS SET / PLASTIC CASE 9-PC



## ▶ METAL DRILL B



A-tip



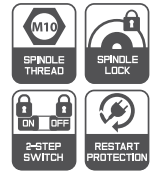
Article No.	Diameter	Working Length	Overall Length
	mm	mm	mm
573010	1.0	12	34
573015	1.5	18	40
573020	2.0	24	49
573025	2.5	30	57
573030	3.0	33	61
573032	3.2	36	65
573035	3.5	39	70
573040	4.0	43	75
573042	4.2	43	75
573045	4.5	47	80
573048	4.8	52	86
573050	5.0	52	86
573055	5.5	57	93
573060	6.0	57	93
573065	6.5	63	101
573070	7.0	69	109
573075	7.5	69	109
573080	8.0	75	117
573085	8.5	75	117
573090	9.0	81	125
573095	9.5	81	125
573100	10.0	87	133
573105	10.5	87	133
573110	11.0	94	142
573115	11.5	94	142
573120	12.0	101	151
573125	12.5	101	151
573130	13.0	101	151

Article No.	Diameter	Working Length	Overall Length
	mm	mm	mm
Standard length			
591003	3.0	30	60
591006	4.0	40	75
591009	5.0	50	85
591012	6.0	60	100
591015	7.0	60	100
591018	8.0	80	120
591021	9.0	80	120
591024	10.0	80	120
591027	12.0	90	150
591030	13.0	90	150
591033	14.0	90	150
591036	16.0	90	150
591039	18.0	95	160
591042	20.0	95	160
591045	22.0	95	160
591048	24.0	95	160
591051	25.0	95	160
Total length 150mm			
591054	5.0	100	150
591057	6.0	100	150
591060	7.0	100	150
591063	8.0	100	150
591066	9.0	100	150
591069	10.0	100	150

## ▶ ANGLE GRINDER 115MM

### Specification & Features

- Powerfull 70 W, Motor to Handle the most demanding jobs
- Spindle lock for quick and easy wheel changes
- Wheel guard adjust for use in various applications
- Switch is located on side of the motor housing for operator convenience
- Die cast alumunium gear housing for maximum gear durability
- Input Power 70 W, Speed 11000 rpm



### ▶ METAL CUTTING DISCS/T42

	Bore diameter	Thickness
	mm	mm

#### with depressed centre

645102	100	16.0	3.0
645104	115	22.2	3.0
645106	125	22.2	3.0
645108	180	22.2	3.0
645110	230	22.2	3.0

#### Straight for chop saws/stationary pendulum action cutters/grinders

645202	300	25.4	3.0
645204	350	25.4	3.0
645206	400	25.4	3.0

### ▶ METAL GRINDING DISCS/T27/30/32

Article No.	Diameter	Bore diameter	Thickness
	mm	mm	mm
651002	100	16.0	6.0
651004	115	22.2	4.0
651006	115	22.2	6.0
651008	125	22.2	6.0
651010	180	22.2	6.0
651014	230	22.2	6.0



## ▶ INOX CUTTING DISCS/T41



Article No.	Diameter	Bore diameter	Thickness
	mm	mm	mm

#### Straight

646002	100	16.0	1.0
646004	115	22.2	1.0
646006	115	22.2	1.6
646008	125	22.2	1.0

### ▶ SAFETY GLASSES / INTEGRA



Article No.	Lens Color
381000	○ clear
381004	● black
381008	● grey
381012	● green
381028	● orange

### ▶ SAFETY GLASSES / SOLO



Article No.	Lens Color
381076	○ clear
381080	● grey

### ▶ SAFETY GLASSES / ALAIR



Article No.	Lens Color
381116	○ clear
381120	● grey
381124	● silver mirror
381140	● blue mirror

# PROTECTIVE TOOLS

## ▶ SAFETY HELMET / GENERAL DUTY



Article No.	Lens Color
411024	<input type="radio"/> white
411027	<input type="radio"/> black
411030	<input type="radio"/> grey
411033	<input type="radio"/> red
411036	<input type="radio"/> yellow
411039	<input type="radio"/> green
411042	<input type="radio"/> blue
411045	<input type="radio"/> orange



## ▶ CHEMICAL RESPIRATOR - DOUBLE FILTER

Article No.	Tested to
391065	EN 149



## ▶ CHEMICAL RESPIRATOR CARTIDGE

Article No.	Tested to
391065	EN 149



## ▶ CHEMICAL RESPIRATOR - SINGLE FILTER

Article No.	Tested to
901060	EN 149

## ▶ FACESHIELD WITH BOND

Article No.	Lens Color
382100	<input type="radio"/> clear



## ▶ EAR MUFF - PM 3010

Article No.	Tested to
401025	EN 352

## ▶ RAINCOAT 431095 - YELLOW



## ▶ RUBBER BOOT 421205 - Size 40,42,44



## ▶ INDUSTRIAL GLOVES 441015 - HW - 006919



## ▶ CUT RESISTANT GLOVES 441020 - HW - 006922



## ▶ PU GLOVES 442015 - HW - 006920



## ▶ COTTON GLOVES 442015 - HW - 006924



## ▶ HOUSEHOLD GLOVES 441035 - HW - 006923



## ▶ PVC GAUNTLETS 441025 - HW - 006921



## ▶ SAFETY VEST/ ORANGE 431000 Size: M, L, XL



## ▶ SAFETY VEST/ GREEN 431000 Size: M, L, XL



## ▶ GLUE GUN with dual temp with glue sticks 442015 - HW - 006924



## ▶ MEASURING TAPE PROGRIP 302685 - 3Mx19MM



## ▶ WELDING MASK / WHP050 Black Lens HW - 006926

# TOOLS



▶ **HAND RIVETER  
HEAVY DUTY**  
10.5" 270MM  
151025 - HW - 006981



▶ **VDE INSULATED  
SCREWDRIVER  
SET 6-PC.**  
153665 - HW - 006982



▶ **SLOTTED & PHILIPS  
SCREWDRIVER SET 8-PC.**  
153640 - HW - 006983



▶ **SLOTTED & PHILIPS  
SCREWDRIVER SET 10-PC**  
153643 - HW - 006984

▶ **PLASTIC TOOL BOX  
/STEEL LOCK**



A. Size: 13"-335x185x130MM  
221105 HW - 006933

B. Size: 16.5" 415x210x190MM  
221110 HW - 006934

C. Size: 19" 480x250x230MM  
221115 HW - 006935



▶ **FULL TOOLSET PLASTIC  
BOX 22-PC.**  
145075 - HW - 006937

▶ **DIY 26-PC.  
TOOLS BOX KIT  
WITH BMC BOX**  
145065 -HW - 006936



▶ **HOME DIY TOOLS  
SET 42-PC.**  
145070 - HW - 006938



▶ **PRECISION  
SCREWDRIVER SET  
6PC. Set**  
153727 - HW - 006985



▶ **ELECTRIC TESTER  
SCREWDRIVER 12v**  
153735 - HW - 006986

▶ **CIRCUIT TESTER  
14 MM**  
153736 - HW - 006987



▶ **SCREWDRIVER TESTER  
14 MM**  
153740 - HW - 006988



▶ **GLASS & TILE DRILL BITS**



▶ **TOOL BOX  
3 COMPARTMENTS  
MACHINIST TOOL  
SET 62-PC.**  
221036 - HW - 006995



▶ **TOOL BOX  
5 COMPARTMENTS  
MACHINIST  
TOOL SET 72-PC.**  
221038 - HW - 006996

**OFFICE:**

**Jakarta Garden City (JGC),  
Cleon Park No. 7-8,  
Jl. Orchid No.1  
Jakarta Timur 13910 - Indonesia**

• **Samarinda Store**

Jl. Jakarta No. 10 Loa Bakung  
Sungai Kunjang - Samarinda  
Kalimantan Timur

• **Makassar Store**

Jl. Urip Sumohardjo No 16B,  
Maccini - Makassar  
Sulawesi Selatan

• **Balikpapan Store**

Jl. Soekarno Hatta, RT 30, No 1B  
dan 1C, Batu Ampar - Balikpapan  
Kalimantan Timur

• **Perintis Store**

Jl. Perintis Kemerdekaan No.99  
Kelurahan Daya Kec. Briringkanaya  
Makassar 90245

• **Barombong Store**

Jl. Permandian Alam No. 71 RT  
001/10 Kel. Barombong,  
Kec. Tamalate - Makassar 90225

• **Pallangga Store**

Jl. Poros Pallangga No. 15  
Desa Jenetallasa, Pallangga  
Kabupaten Gowa 92161

